

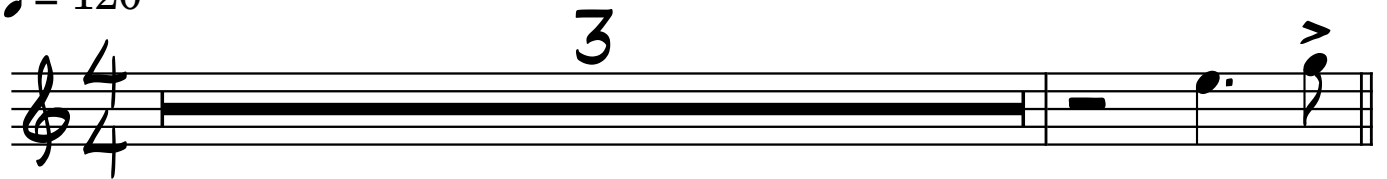
I Eb

Stompin' at the Savoy

Edgar Sampson

♩ = 120

3



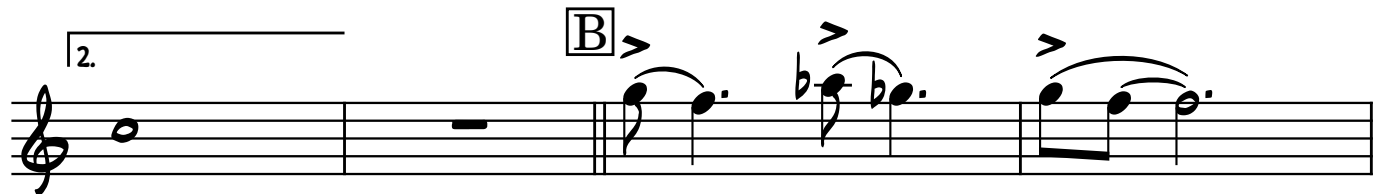
A



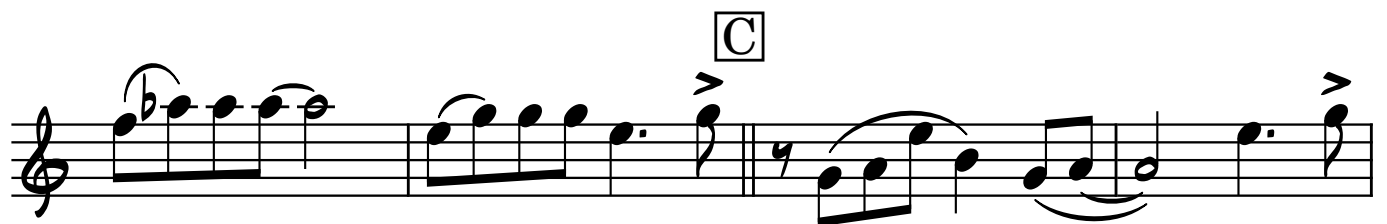
1.



2. B



C



C^{Maj7} D

p *f*

p *f*³ *p*

*f*³ *f* *p*

E A Δ E7 A Δ

A^{#o7} B-7 E7

A⁶ 1. 2. 3.

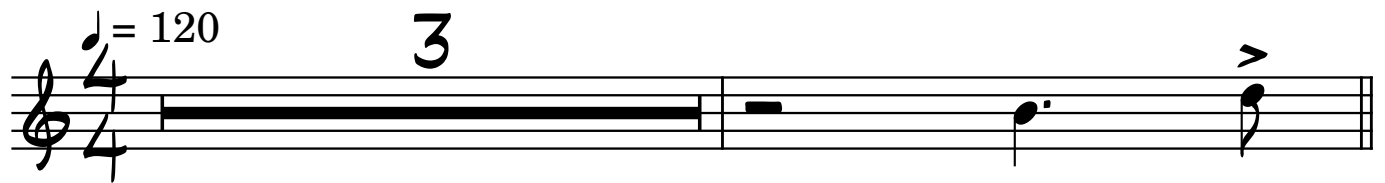
II Eb

Stompin' at the Savoy

Edgar Sampson

$\text{♩} = 120$

3



A musical staff in 4/4 time. It begins with a 3-measure rest, indicated by a large '3' above the staff. The staff ends with a quarter note G4 with an accent (>).

A



A musical staff in 4/4 time. It starts with a repeat sign. The first measure contains two eighth notes (F4, G4) with a slur. The second measure contains two eighth notes (A4, B4) with a slur. The third measure contains a quarter note (C5) with an accent (>). The fourth measure contains two eighth notes (B4, A4) with a slur. The fifth measure contains two eighth notes (G4, F4) with a slur. The sixth measure contains a quarter note (E4) with a sharp sign (#) and an accent (>).

1.

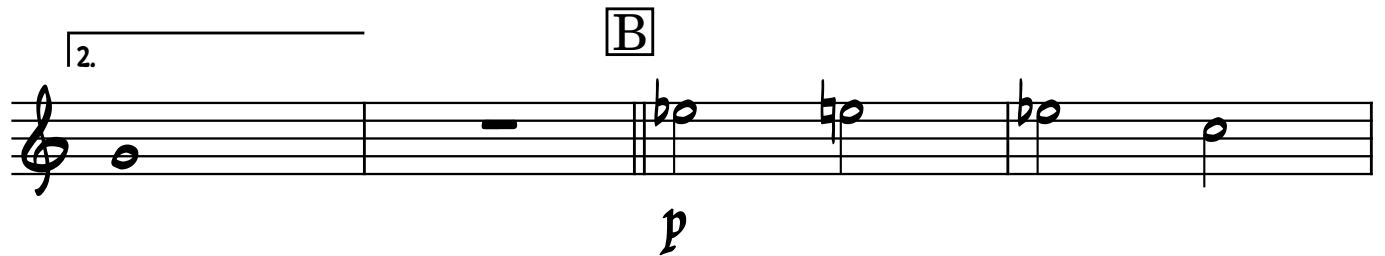


A musical staff in 4/4 time. It starts with a repeat sign. The first measure contains two eighth notes (F4, G4) with a slur. The second measure contains two eighth notes (A4, B4) with a slur. The third measure contains a quarter note (C5) with an accent (>). The fourth measure contains two eighth notes (B4, A4) with a slur. The fifth measure contains two eighth notes (G4, F4) with a slur. The sixth measure contains a quarter note (E4) with a sharp sign (#) and an accent (>).

2.

B

p



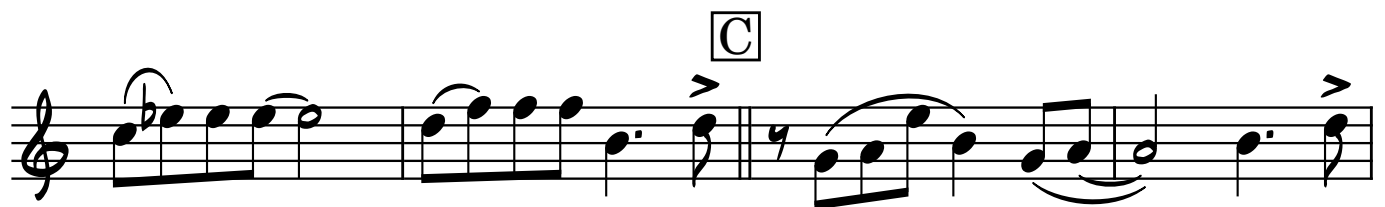
A musical staff in 4/4 time. It starts with a repeat sign. The first measure contains a whole note (F4). The second measure contains a whole rest. The third measure contains a quarter note (Bb4). The fourth measure contains a quarter note (Ab4). The fifth measure contains a quarter note (G4). The sixth measure contains a quarter note (F4). The dynamic marking *p* is placed below the staff.

f



A musical staff in 4/4 time. It contains a series of notes: a quarter note (F4) with a sharp sign (#), a quarter note (G4), a quarter note (A4) with a sharp sign (#), a quarter note (B4) with a sharp sign (#), a quarter note (C5), and a quarter note (B4) with an accent (>). The dynamic marking *f* is placed below the staff.

C



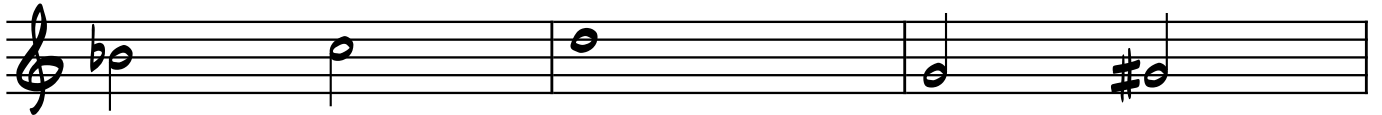
A musical staff in 4/4 time. It starts with a repeat sign. The first measure contains two eighth notes (F4, G4) with a slur. The second measure contains two eighth notes (A4, B4) with a slur. The third measure contains a quarter note (C5) with an accent (>). The fourth measure contains two eighth notes (B4, A4) with a slur. The fifth measure contains two eighth notes (G4, F4) with a slur. The sixth measure contains a quarter note (E4) with a sharp sign (#) and an accent (>).



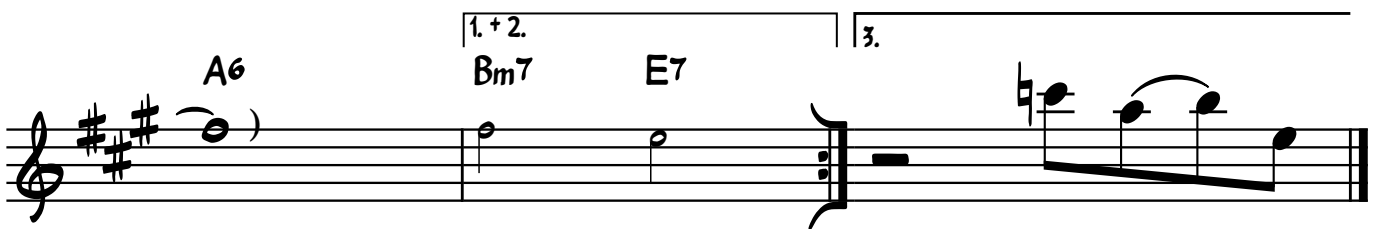
D



p



f



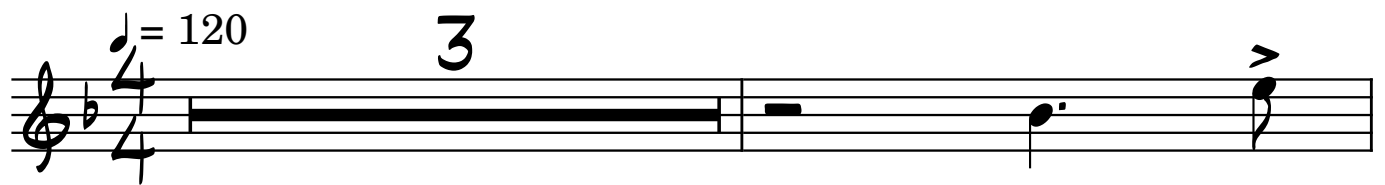
III Bb (TS)

Stompin' at the Savoy

Edgar Sampson

$\text{♩} = 120$

3



A



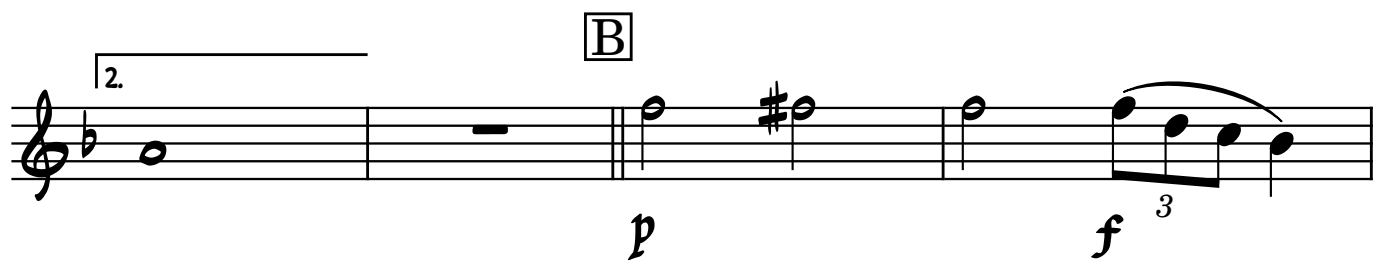
1.



B

2.

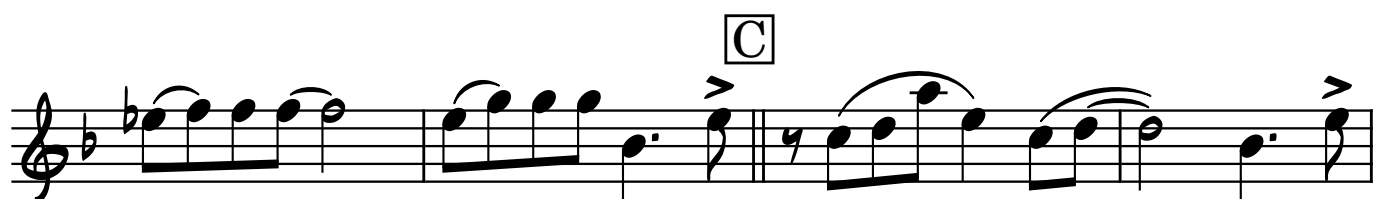
p *f*³

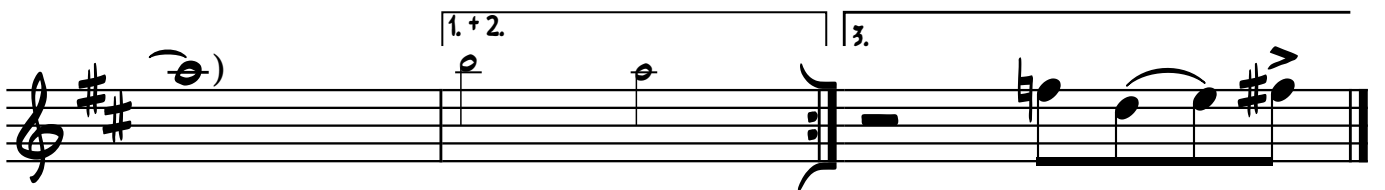
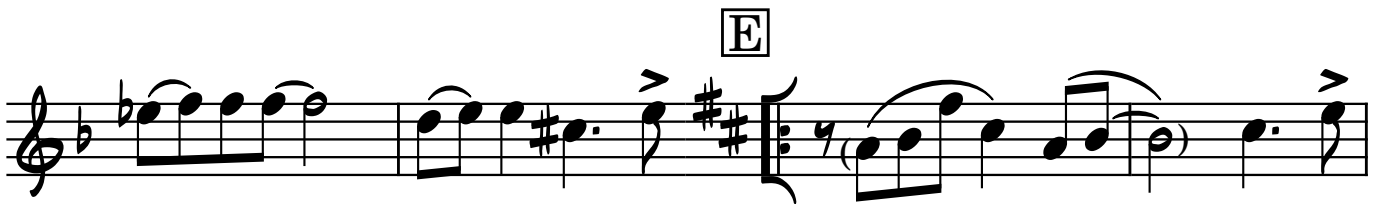
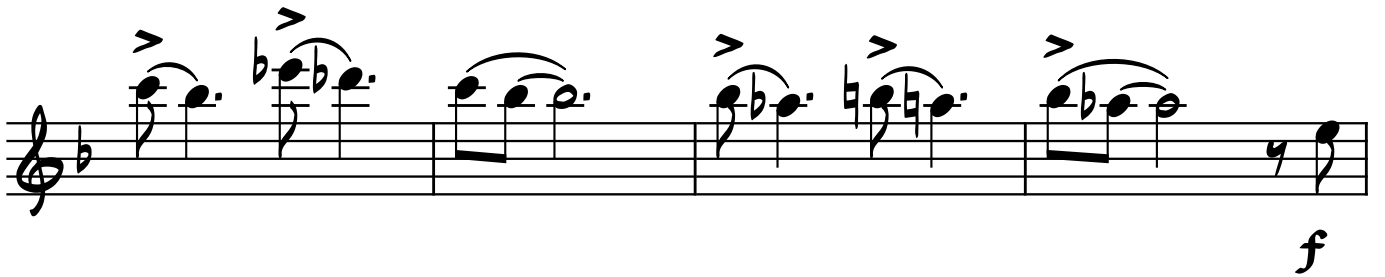
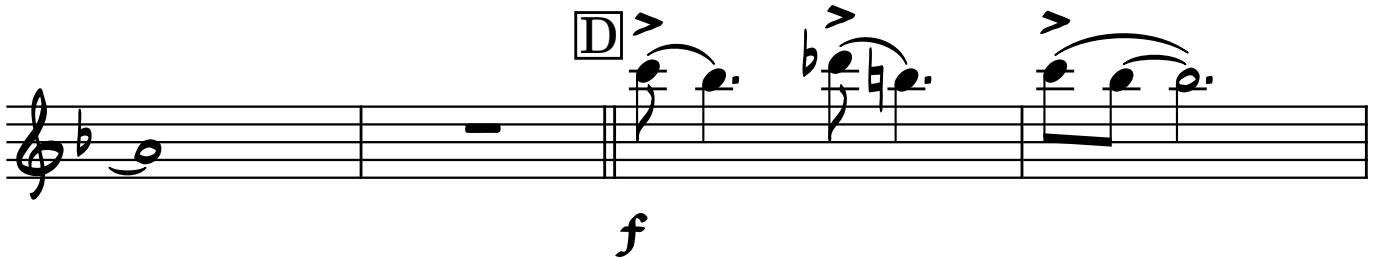


p *f*³ *p* *f*



C





Bkl

Stompin' at the Savoy

Edgar Sampson

♩ = 120

4

A

1. 2.

B

C

D

E

1.+2. 3.

Keyboard

Stompin' at the Savoy

Edgar Sampson

$\text{♩} = 120$ Solo $\text{E}^{\flat}\Delta$ $\text{Fm}7$ $\text{Gm}7$

Solo End $\text{B}^{\flat}7$ **A** $\text{E}^{\flat}\Delta$ $\text{B}^{\flat}7$

$\text{E}^{\flat}\Delta$ $\text{E}^{\circ}7$ $\text{F}-7$ $\text{B}^{\flat}7$

1. $\text{E}^{\flat}\Delta$ $\text{Cm}7$ $\text{Fm}7$ $\text{B}^{\flat}7$ 2. $\text{E}^{\flat}\Delta$ $\text{B}^{\flat}-7$ $\text{E}^{\flat}7$

B $\text{A}^{\flat}7$ $\text{A}7$ $\text{A}^{\flat}7$ $\text{D}^{\flat}7$ $\text{B}7$ $\text{D}^{\flat}7$

$\text{G}^{\flat}7$ $\text{G}7$ $\text{G}^{\flat}7$ $\text{C}^{\flat}7$ $\text{B}^{\flat}7$

C

E^bMaj7

B^b7

E^bMaj7

E^o7

Musical staff for section C, first line. Treble clef, key signature of two flats (Bb, Eb), 9/8 time signature. The melody consists of eighth and quarter notes. Accents (>) are placed over the final notes of the first and second phrases.

F-7

B^b7

E^bMaj7

F-7

B^b7

Musical staff for section C, second line. Treble clef, key signature of two flats (Bb, Eb), 9/8 time signature. The melody continues with eighth and quarter notes. The staff ends with a double bar line.

D

A^b7

A7

A^b7

D^b7

B7

D^b7

G^b7

G7

Musical staff for section D, first line. Treble clef, key signature of two flats (Bb, Eb), 9/8 time signature. The melody consists of eighth and quarter notes.

G^b7

C^b7

D7

G7

Musical staff for section D, second line. Treble clef, key signature of two flats (Bb, Eb), 9/8 time signature. The melody continues with eighth and quarter notes. A dynamic marking 'f' (forte) is placed below the first measure. An accent (>) is placed over the final note of the phrase.

E

CΔ

G7

CΔ

C^{#o}7

Musical staff for section E, first line. Treble clef, key signature of two flats (Bb, Eb), 9/8 time signature. The melody consists of eighth and quarter notes. An accent (>) is placed over the final note of the phrase.

D-7

G7

C6

1.+2.

Dm7

G7

3.

C⁹₉

Musical staff for section E, second line. Treble clef, key signature of two flats (Bb, Eb), 9/8 time signature. The melody continues with eighth and quarter notes. A dynamic marking 'f' (forte) is placed below the final measure. An accent (>) is placed over the final note of the phrase.