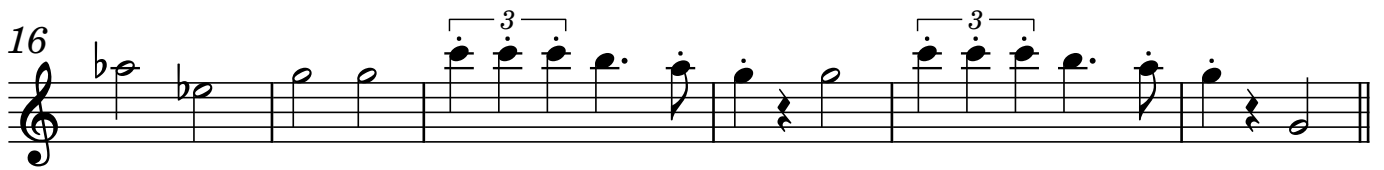
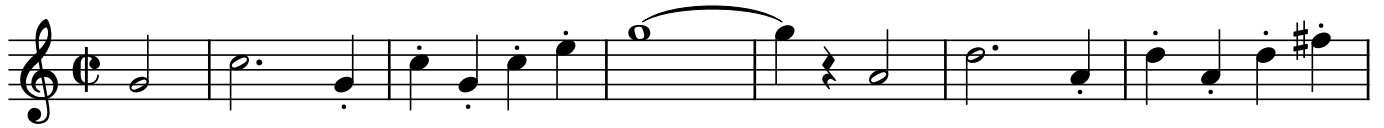


I Eb

# Das ist die Liebe der Matrosen

Werner Heymann

$\text{♩} = 120$



**A**



**B**



**C**



**D**



2

58



64



70



76



83

**E**



89



95



101



107



113

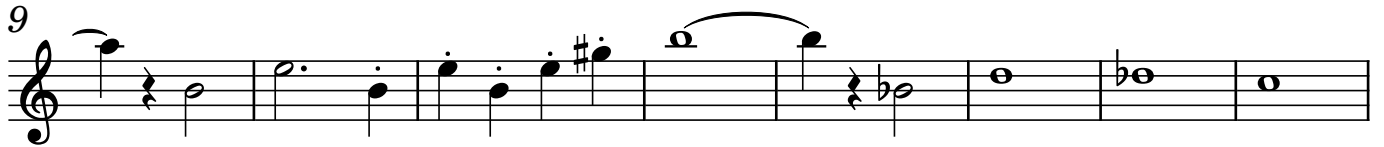
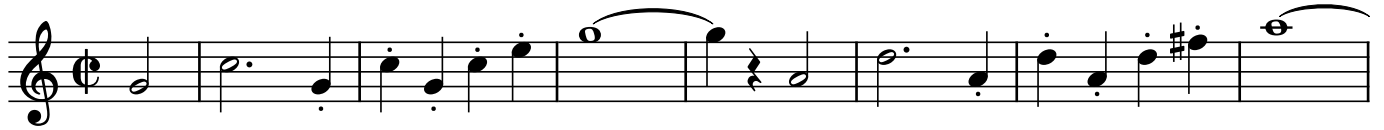


II Eb

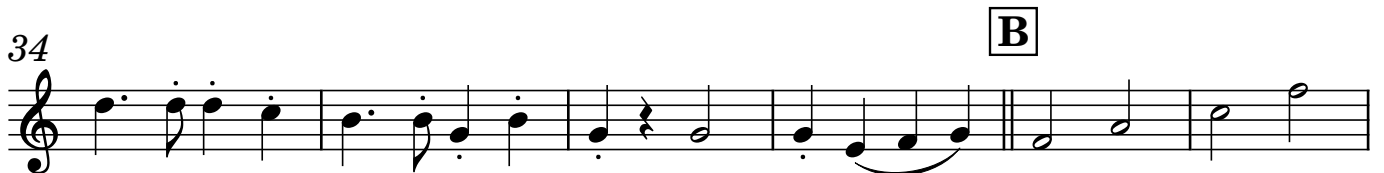
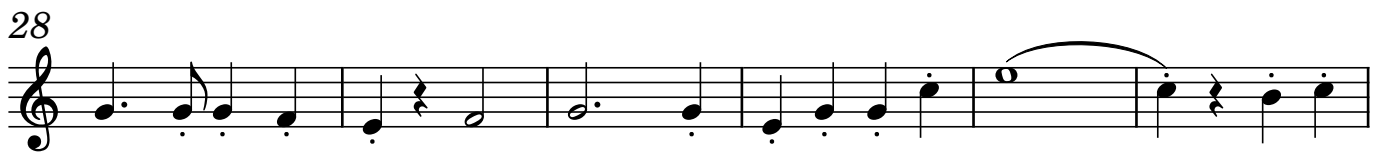
# Das ist die Liebe der Matrosen

Werner Heymann

$\text{♩} = 120$



**A**



**C**



**D**

2

58



64



70



76



83

**E**



89



95



101



107



113

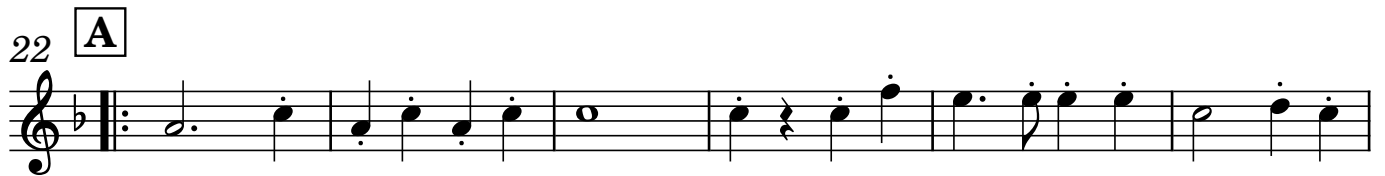
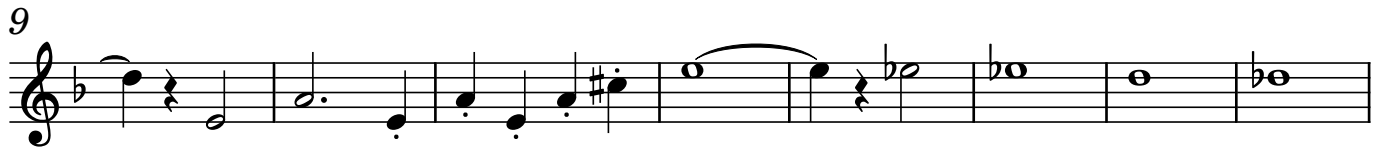


III Bb (TS)

# Das ist die Liebe der Matrosen

Werner Heymann

♩ = 120



2

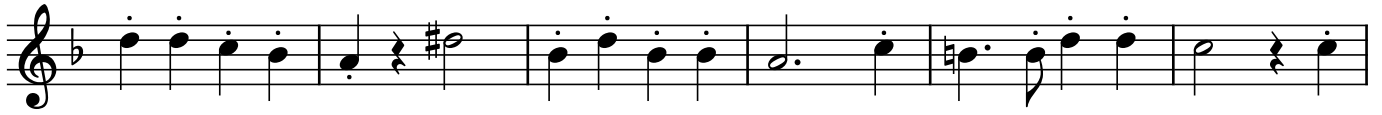
58



64



70



76



83 **E**



89



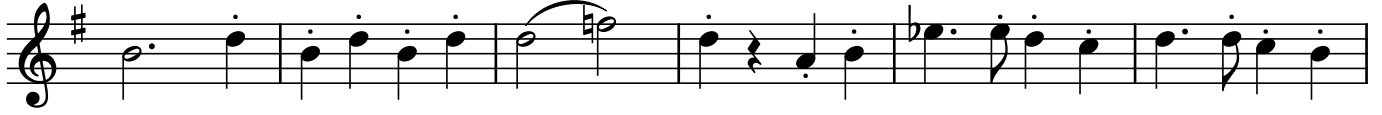
95



101



107



113



IV Bb (Bkl) Das ist die Liebe der Matrosen

Werner Heymann

♩ = 120

15

22 **A**

28

34 **B**

40

46 **C**

52 **D**

58

64

2

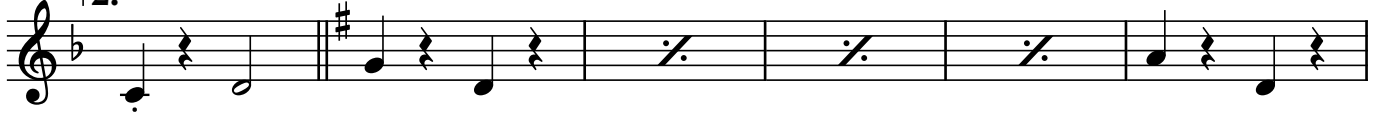
70



76



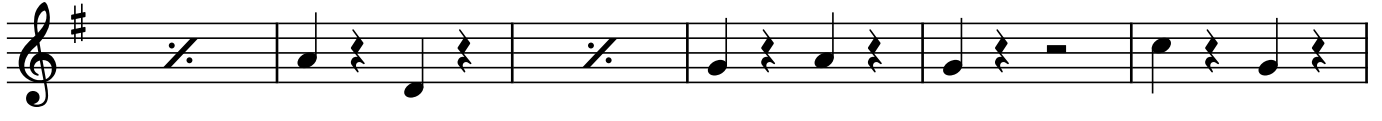
82



88



94



100



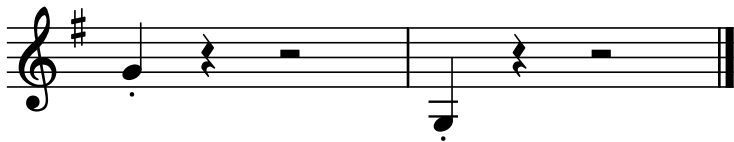
106



112



118





II Bb (TS)

# Das ist die Liebe der Matrosen

Werner Heymann

$\text{♩} = 120$

9

17

22 **A**

28

34 **B**

40

46 **C**

52 **D**

2

58



64



70



76



83 [E]



89



95



101



107



113



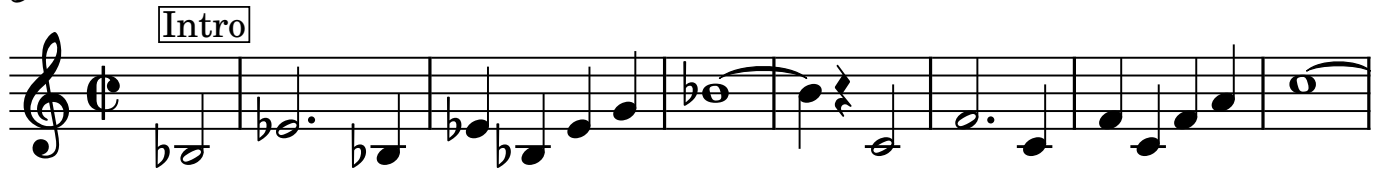
Kb

# Das ist die Liebe der Matrosen

Werner Heymann

♩ = 120

**Intro**



9



**Intro End Play**

16



**A**

22



28



34



**B Play**

38



44 Eb/G F#o Bb7/F **C** Eb Eb Bbm/Db

49 C7 Abm Eb Bb7 Eb Bb7

54 **D** Eb

59 C7 Fm Bb7 Eb Eb13/E Fm Bb7 Eb

64 Eb

69 C7 Fm Bb7 Eb Eb13/E Fm Bb7 Eb

74 F7 Bb F7 Bb F7

79 Bb F7 1. Bb Bb7 2. Bb C7

83 **E** F C7

88 F C7 F

94 C7 F C7/G F7 **Stop**

**Play** 99 Bb F Bb

105 F/A Ab0 C7/G F D7 Cm/Eb

111 Bbm F C7 F C7 Bbm

116 F C7 F F