

Alto 1

On the sunny side of the street

♩ = 116

p

6 Am7 D7

9 **A** G B7 C B7

13 G/E A7 Am7 D7

16 1. G 2. G

18 **B** Dm7 G7 C C Amsus

22 Em7 A7 Am7 Em Am D7

26 **C** G B7 C B7

30 G/E A7 Am7 D7 G

34 **D** TS Dm7 G7 C C Amsus

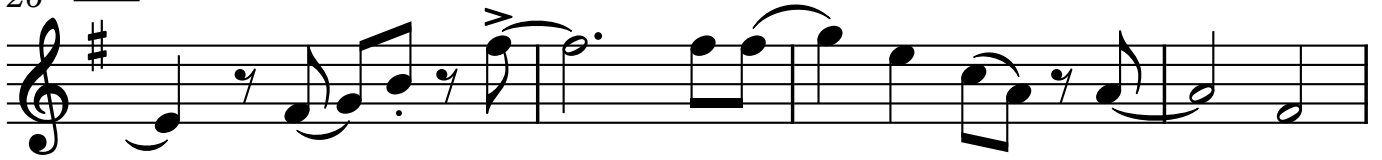
38 Em7 A7 Am7 Em Am D7

42 **E** G B7 C B7

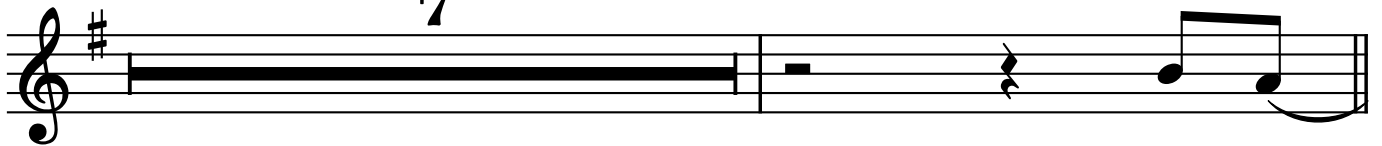
46 G/E A7 Am7 D7

49 1. G G D7#9 G#6/9 G9

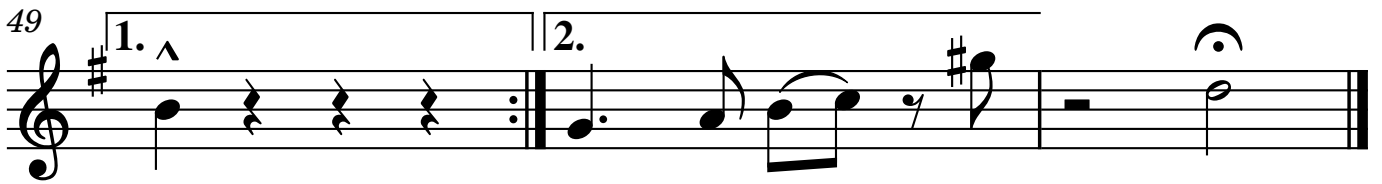
26 **C**



34 **D**



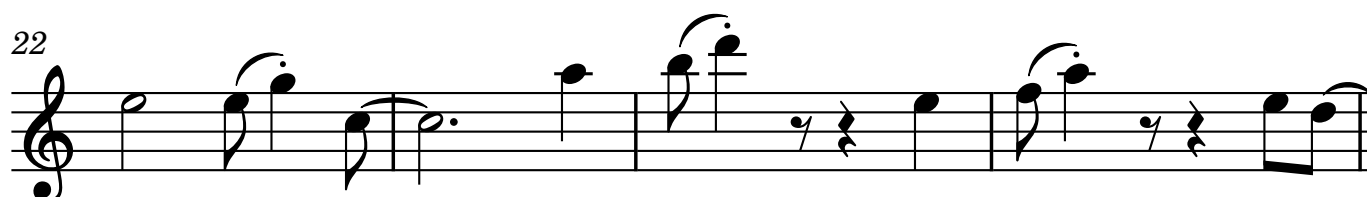
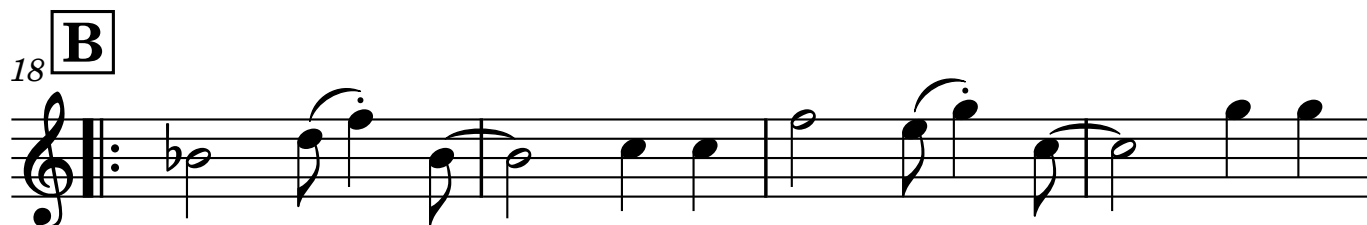
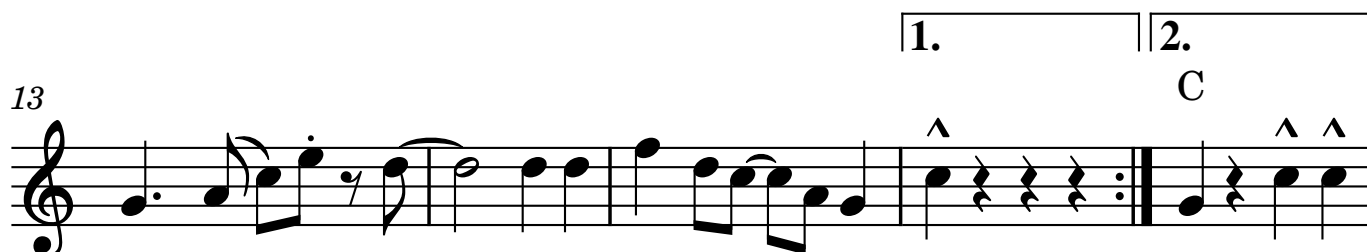
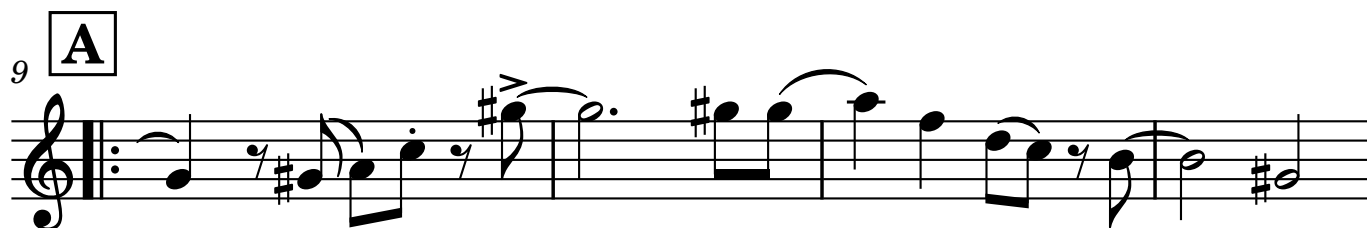
42 **E**



TS

On the sunny side of the street

♩ = 116



C

26

Musical staff for measure 26, starting with a treble clef and a key signature of one sharp (F#). The melody consists of eighth and quarter notes with various accidentals.

30

Musical staff for measure 30, continuing the melody. It ends with two notes marked with an accent (^) and the word "Solo" above them.

D

34

Musical staff for measure 34, starting with a treble clef and a key signature of one sharp. Chord symbols Gm7, C7, F, F, and Dmsus are placed above the staff.

38

Musical staff for measure 38, continuing the melody. Chord symbols Am7, D7, Dm7, and Bm are placed above the staff.

E

41

Musical staff for measure 41, starting with a treble clef and a key signature of one sharp. A Dm chord symbol is placed above the staff.

45

Musical staff for measure 45, continuing the melody.

49

Musical staff for measure 49, featuring a first ending (1.) with an accent (^) and a second ending (2.) leading to a final note.

Bkl

On the sunny side of the street

♩ = 116

1

6

9 **A**

10 1. 2. C

13 **B**

14

C

26

30

D

34

7

E

42

46

1.

2.

50

22 Gm7 C7 Cm7 Gm Cm F7

26 **C** Bb D7 Eb D7

30 Bb/G C7 Cm7 F7 Bb

34 **D** Fm7 Bb7 Eb Eb Cmsus Gm7 C7 Cm7 Gm Cm F7

42 **E** Bb D7 Eb D7

46 Bb/G C7 Cm7 F7

49 1. Bb Bb F7#9 B6/9 Bb9