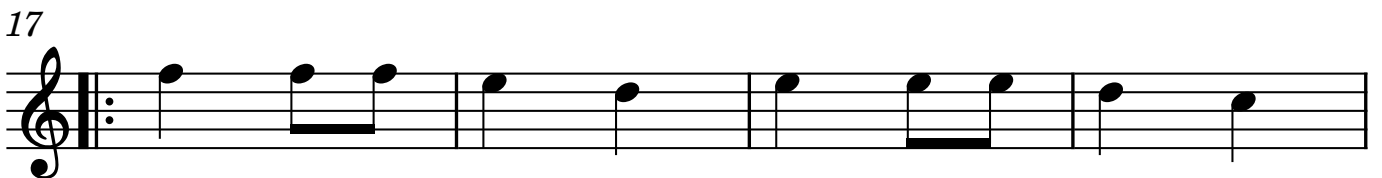
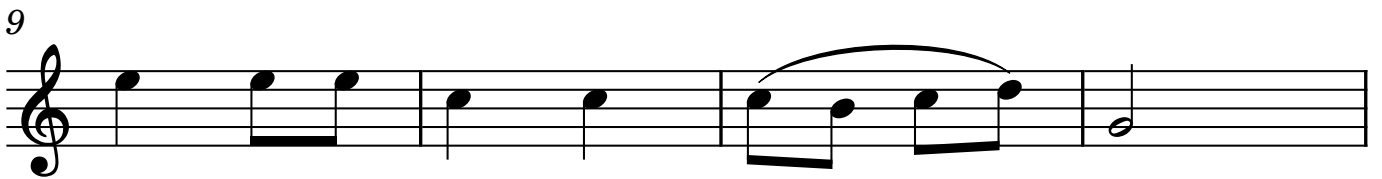
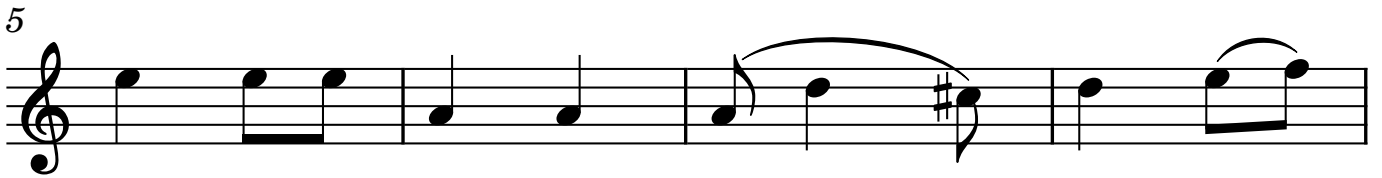


Altsaxophon 1

# Rosamunde

Schubert

Andantino ♩ = 80

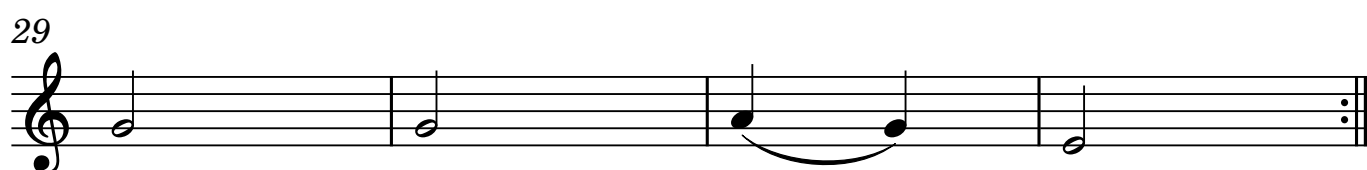
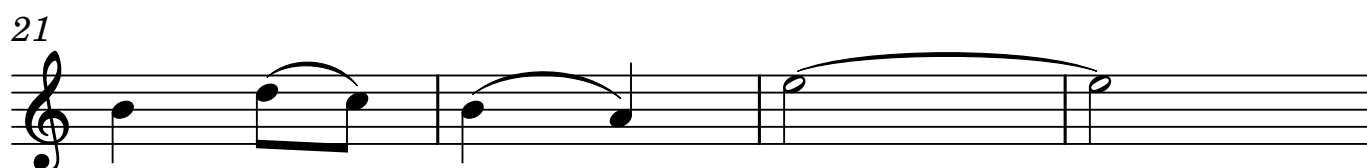
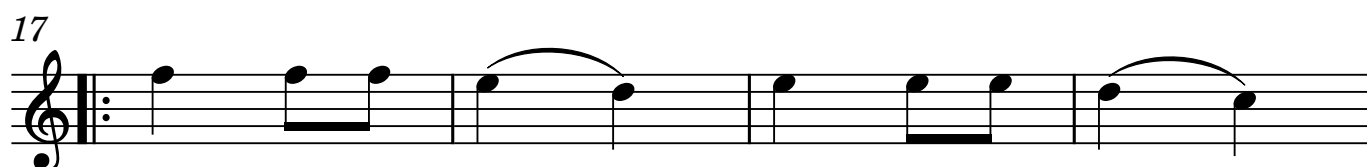
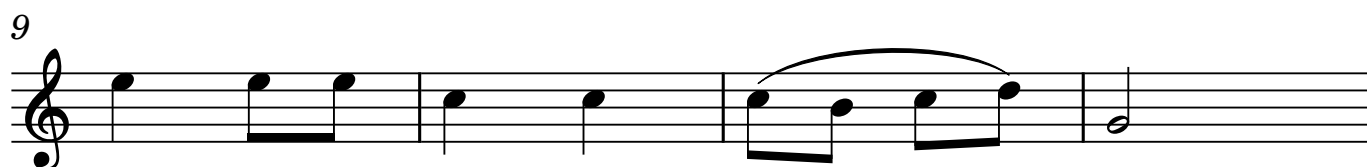
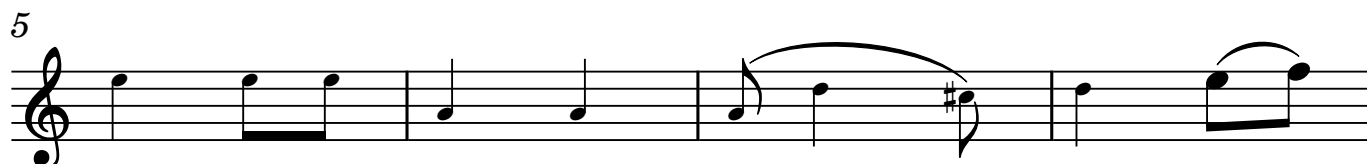


Altsaxophon 2

# Rosamunde

Gershwin

Andantino ♩ = 80

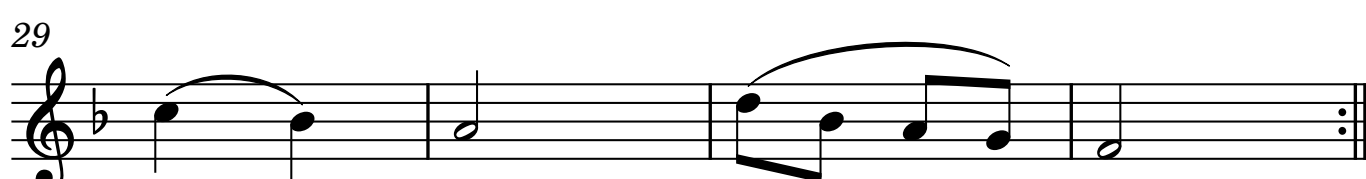
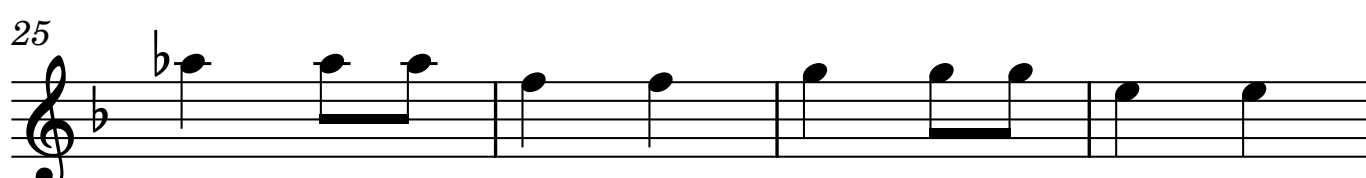
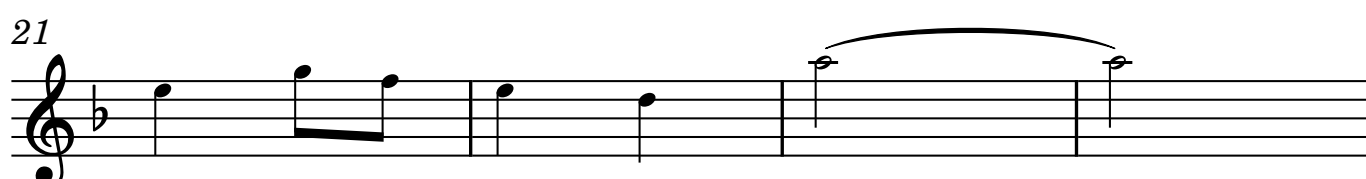
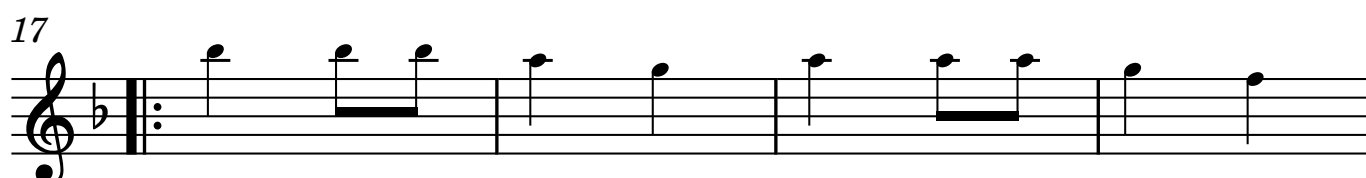
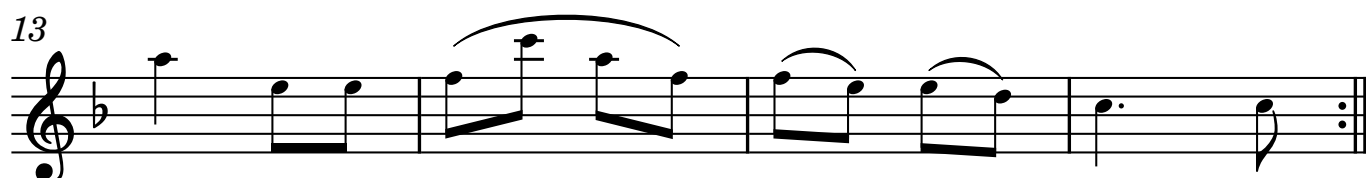
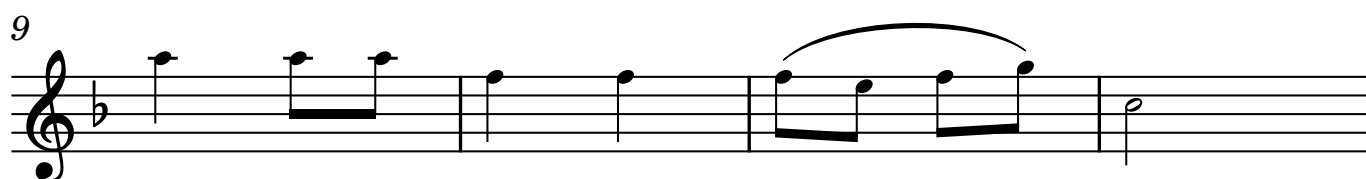
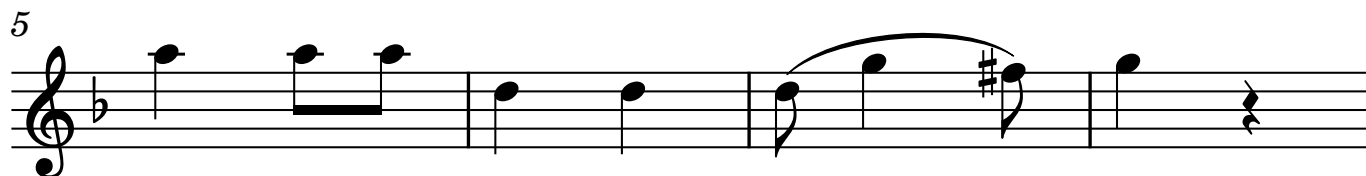


Tenorsaxophon

# Rosamunde

Gershwin

Andantino ♩ = 80



# Rosamunde

Gershwin

Andantino ♩ = 80

5

9

13

17

21

25

29

## Keyboard

## Rosamunde

Gershwin

Andantino ♩ = 80

Chord progression for measures 1-4: Eb Eb/G Bb7 Bb7/D

Chord progression for measures 5-8: Eb C7 Fm C7 Fm Bb7/D

Chord progression for measures 9-12: Eb Eb/G Bb7 Bb7/D

Chord progression for measures 13-16: Eb Bb7/F Eb/G Bb7/F F7 Bb7

Chord progression for measures 17-20: Bb7/F Bb7/D Eb Cm

Chord progression for measures 21-24: G Cm G Adim G

Chord progression for measures 25-28: Ab7 Ddim Bb7/F

Chord progression for measures 29-32: Eb Bb7 Eb/G Fm Bb Eb